



FireDetectionSolutions



- RUBEZH Group of Companies is a team of professionals that can manage any task in the sphere of fire safety and security for people and property. Our company was established in 1988 for security systems installation purposes. Its dynamic growth was achieved through development of new business fields such as research and design, projection, manufacture and sales of fire alarm systems.

Steady development of our company determined its leading position in the fire safety industry of Russia and now we feel proud to be able to tackle foreign markets and ready to develop mutual co-operation with new partners.

- Our group's structure:
 - "Design Office of Fire Automatics» Research Department
 - Factories: "Sensor" & "Timer"
 - "RUBEZH" Trade House" Sales Company
 - "Special Fire Safety Project" Engineering Center
 - Installation companies: "RUBEZH" & "Sigma"
- Our mission
To provide our clients with integrated solutions that guarantee fire safety of their life and property.



- Following our mission we:
 - Design fire alarm systems of various complexity;
 - Manufacture and sale a wide range of fire alarm equipment;
 - Install security systems of various complexity;
 - Offer unique equipment for highly tailored customer needs.

- Quality assurance
RUBEZH is guided by the quality management principals underlined by ISO 9001:2000 international standard. The quality of our products complies with the requirements of Russian fire security norms and European quality product standards - EN 54. While creating new solutions we always rely on our customers' opinion and experience considering them as co-authors.

Together with our partners we continuously reach new professional levels improving quality of our products and services. That's why key values for us are constant innovations, creative business decisions and personal responsibility.

- Permanent Innovations.
The basis of our market success today is high quality of our products and development of fresh ideas to provide our customers with the best solutions.
- Creative Business Decisions and Personal Responsibility.
For each member of our team and for the company in general personal responsibility means permanent control of every activity and steady development of business efficiency requirements.

INTELLIGENT PHOTOELECTRIC SMOKE DETECTOR

EP 212-87

Complies with EN 54-7



● Technical characteristics

Operating voltage: 9 to 30 V

Standby current: 95 μ A

Inertial triggering: less than 5 s

Operating temperature: -25 to +55°C

Overall dimensions (including base): 106 × 41

● Two functional testing modes

Unique testing device with a flexible base and a metal pin provides easy checking smoke detector workability.

Optical tester with an ergonomic design uses special protocol and enables smoke detector testing on high ceilings up to 6 m. Power supply is provided by AG type batteries and tester is protected against an accidental inversion of the battery polarity.



Advantages

Algorithm of automatic dust accumulation compensation eliminates the possibility of false alarms concerned with dust accumulation in the smoke chamber.

Microprocessor signal analysis ensures the detector to take the decision about the inflaming in a particular zone to a highest degree of accuracy.

EP 212-87 performs self-diagnostic check along with visual LED indication identifying six states including fire mode, standby mode, malfunction of the optoelectronic couple, prior and critical dust level in the smoke chamber and undernutrition situation.

In order to facilitate the loop efficiency testing without detectors during installation, a technological bridge is provided.

Special features

Unified two-wire base is available with every RUBEZH photoelectric smoke detector.

For compatibility with four-wire equipment we offer a special adapting device compatible with our smoke detectors line.



CONVENTIONAL PHOTOELECTRIC SMOKE DETECTOR

EP 212-41 M

Complies with EN 54-7

Technical characteristics

Operating voltage: 12 to 30 V

Standby current: 50 μ A

Inertial triggering: less than 5 s

Operating temperature: -25 to +55°C

Overall dimensions (including base): 106 × 60



Suspended ceiling mounting kit

In case installation of smoke detectors at suspended ceiling is required we can provide you with the right solution for RUBEZH smoke detector line.

Suspended ceiling mounting kit is designed for both EP 212-41M and EP 212-87 in several fixing modes to provide easy fixation and esthetic appearance of smoke detector at the place of installation.





Advantages

Design and construction features of traditional conventional smoke detector guarantee its reliable operation.

Diminutive design of horizontally ventilated smoke chamber enabled us to use the additional space as the dust accumulation reservoir. It helps to reduce susceptibility to false alarms at the permanent detector sensitivity.

Made with non-lead technology applied PCB with varnish covering increases the level of detector resistance to external action.

Detector protection from electromagnetic interferences and high level corrosion stability of contact set ensure its sustained performance.

Special features

Dust cover is provided for smoke chamber protection from ingress of dust during transportation and mounting.

Electrical circuit supports an additional terminal that provides remote indicator output.

PHOTOELECTRIC SMOKE DETECTOR

EP 212-45
MARCO line



Technical characteristics

Operating voltage: 7.5 to 30 V

Standby current: 50 μ A

Inertial triggering: less than 5 s

Operating temperature: -25 to +55°C

Overall dimensions (including base): 93 × 60 mm

Advantages

Marco line represents a range of detectors in common design that easily meet the requirements of any fire detection project.

EP 212-45 has improved technical specifications along with wide range of supply voltage, operation temperature and low current consumption. Easy testing is performed by pressing the test button on the detector cover.

In case installation of smoke detectors at suspended ceilings is required mounting kit will be the right solution.

Dust cover is provided for smoke chamber protection from ingress of dust during transportation and mounting.

PHOTOELECTRIC SMOKE/HEAT DETECTOR

EP 212/101-45M-A2
MARCO line



Technical characteristics

Operating voltage: 9 to 27 V

Standby current: 95 μ A

Inertial triggering: less than 5 s

Triggering temperature of the detector
by the maximum temperature rate: 63°C

Temperature rising speed at which
the detector triggers: 5°C/min

Operating temperature: -25 to +55°C

Overall dimensions (including base): 93 × 60 mm

Advantages

This model is intended to detect flaming by smoke concentration, by maximum temperature rate and by the speed of temperature rise.

Algorithm of automatic dust accumulation compensation eliminates the possibility of false alarms, concerned with dust accumulation in the smoke chamber. Microprocessor signal analysis ensures the detector to take the decision about the flaming in a particular zone to a highest degree of accuracy.

This detector type performs self-diagnostic check along with visual LED indication identifying six states including fire mode, standby mode, malfunction of the optoelectronic couple, prior and critical dust level in the smoke chamber and undernutrition situation.

Two functional testing modes of the detector are available, by pressing the test button and with the help of unified optical tester.

STAND ALONE PHOTOELECTRIC SMOKE DETECTOR

EP 212-50M
MARCO line



Technical characteristics

Operating voltage: 7.2 to 9 V

Standby current: 30 μ A

Inertial triggering: less than 5 s

Operating temperature: -10 to +55°C

Volume of audible signal: 85dB

Overall dimensions (including base): 95 × 50 mm

Distinctive feature

If EP 212-50M2 has an individual application in the separate apartments, then EP 212-50M can be joined into a group up to 8 pcs to initiate the "Outside alarm" signal when at least one of them triggers.

Advantages

The line is specially designed for dwelling houses in order to prevent fire and to save lives and property. These two modifications are easy to install, due to embedded power supply they do not require any cable laying and any additional devices. Continuous operation is guaranteed by F22 battery type with nominal voltage 9 V.

The detector initiates four types of sound alarm signal: "Attention", "Fire", "Battery low", "Outside alarm" and provides LED indication in the standby mode simplifying its usability and making it very informative for an end-user.

Intelligent signal processing ensures the detector to take the decision about the inflaming in a particular zone to a highest degree of accuracy.

SWITCHING POWER SUPPLY



Technical characteristics

Battery capacity: up to 24 Ah

Input voltage: 130 – 250 V

Nominal output DC voltage: 12 V

Loading current: 1.2 A, 2 A, 5 A

Temperature range: -10/+40 °C

Basic feature

Power supplies are designed in different boxes, including metal and plastic covers with different overall dimensions. This choice helps to built an optimal and efficient power supply system both for fire and security equipment.

Advantages

Our power supply line includes three modifications that are ranged by output current value. Each of them has a protection system against short-circuit, accidental inversion of the battery polarity and its overcharge and complete discharge.

Design of electric circuit guarantees an automatic switch to operating from storage battery when AC power fails and switching from battery supply mode back to mains operation when AC voltage is recovered. Automatic storage battery charge keeping full battery capacity at mains is guaranteed.

LED indication is performed by three parameters: presence of mains, output voltage and indication of accumulator battery state.

MANUAL CALL POINT



● Technical characteristics

Operating voltage: 9 to 30 V

Standby current: 50 μ A

Operating temperature: -40° to +60°C

Overall dimensions (including base): 87 × 90 × 45 mm

● Advantages

Is specially designed for manual warning signals in both fire alarm and security systems.

Light announcement in standby mode for signal loop control.

Protection cover with seal set possibility.

The reset is simply activated by a key.

SOUNDER



Technical characteristics

Operating voltage: 9 to 14 V

Standby current: 30 μ A

Sound pressure level: not less than 90 dB

Operating temperature: -25° to +55°C

Overall dimensions (including base): 87 × 88 × 44

Advantages

Is specially designed for acoustic warning signals in both fire alarm and security systems.

Two type acoustic signal, intelligent signal rate set.

Horizontal and vertical mounting is possible.

Operates with reversal voltage polarity.

Light announcement is available.



Photoelectric
Smoke Detectors

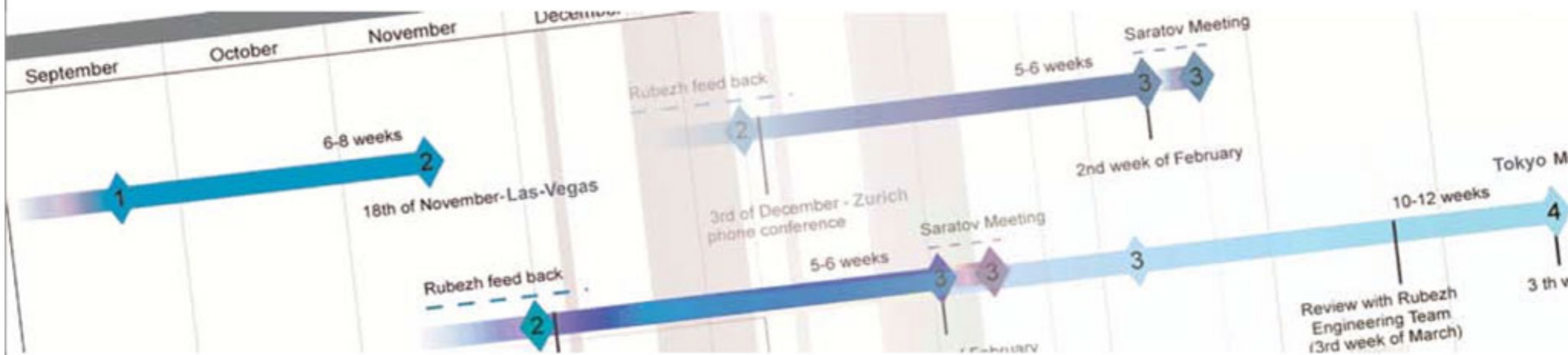
Sounder

Manual
Call Point

Control
Panel

Optical Tester

Trading hall is equipped with
RUBEZH fire detection devices



RUBEZH Group of Companies

Main office

25, Ulyanovskaya str., Saratov, 410056, Russia
 TEL +7 8452 510-877
 FAX +7 8452 222-972

Representative office

21, Ozernaya str., Moscow, 119361, Russia
 TEL +7 495 437-52-07
 FAX +7 495 437-96-02

e-mail: sales@rubezh.ru
www.rubezh.ru





FireDetectionSolutions